



PcdProbeList

Support Tool for Migrating PC-DMIS Probe Configurations from
Legacy Machines to Maestro

Version: 1.2026.1.9

13 May 2026



Table of contents

1. Software warranty and support.....	2
2. Purpose of this Quick Guide	2
3. User interface.....	3
4. Short Workflow Instruction.....	4
5. About Hexagon	7

1. Software warranty and support

This product is freeware and is not covered under any software warranty. There is no liability for any damage to the used computer or other installed hardware or software. There is no warranty regarding the correct function of the software. Furthermore, there is no claim to the elimination of errors and defects, as well as to further development of the software and to the accuracy and timeliness of the documentation.

There is no claim to the software support on the part of the manufacturer. Suggestions for improvement can be sent to the following email address:

[DE DGU WET Customer Solutions](#)

By using the software, you automatically accept this agreement. Any deviating agreements must be defined in writing with the manufacturer.

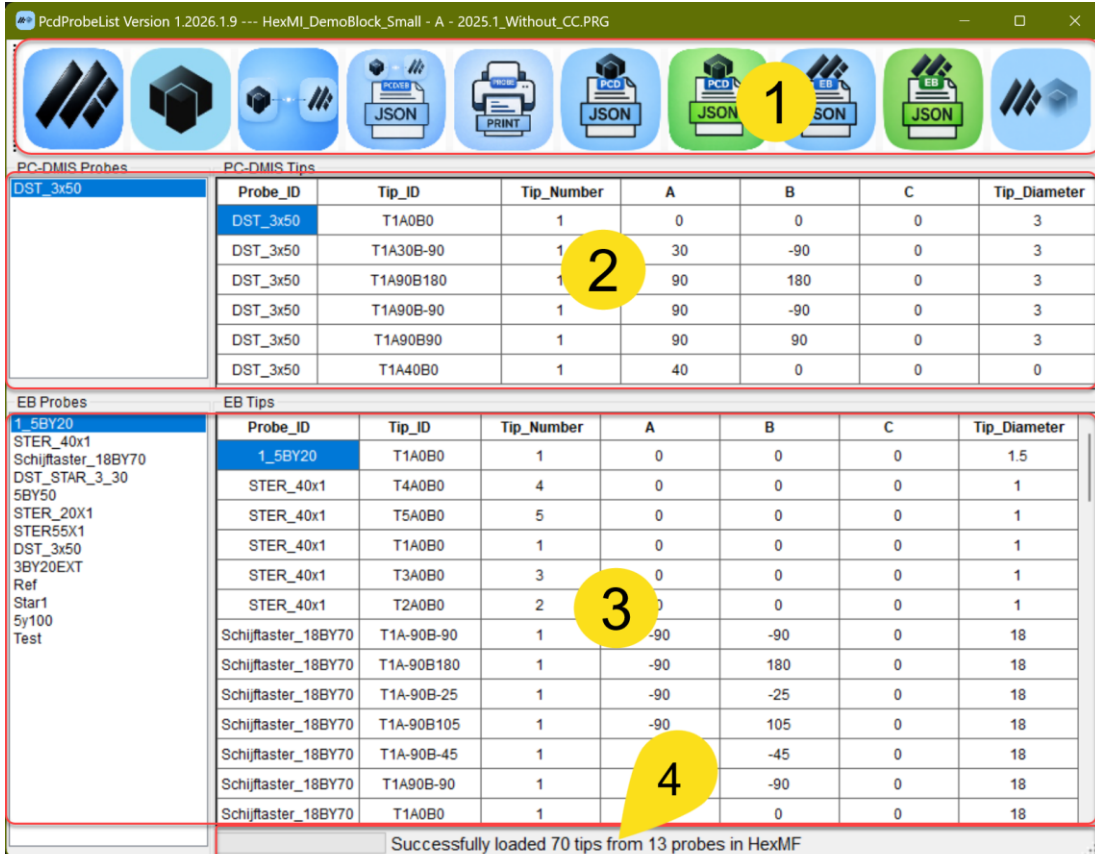
2. Purpose of this Quick Guide

PcdProbeList is an utility tool which helps to adjust probe and tip information's from legacy PC-DMIS measurement routines for MAESTRO CMMs. This quick guide describes the process of transferring probe data from a PC-DMIS measurement routine to MEASTRO. Only the functions of the software required for this are described.

Please send tips and suggestions for this document to:

E-Mail: [DE DGU WET Customer Solutions](#)

3. User interface



The screenshot shows the PcdProbeList software interface. At the top is a toolbar with various icons for file operations and printing. Below the toolbar are two main data tables. The first table, titled 'PC-DMIS Probes' and 'PC-DMIS Tips', lists probe and tip information for PC-DMIS. The second table, titled 'EB Probes' and 'EB Tips', lists probe and tip information for EB (MAESTRO). At the bottom is a status bar with a message: 'Successfully loaded 70 tips from 13 probes in HexMF'. Yellow callouts 1, 2, 3, and 4 highlight the toolbar, the PC-DMIS table, the EB table, and the status bar respectively.

Probe_ID	Tip_ID	Tip_Number	A	B	C	Tip_Diameter
DST_3x50	T1A0B0	1	0	0	0	3
DST_3x50	T1A30B-90	1	30	-90	0	3
DST_3x50	T1A90B180	1	90	180	0	3
DST_3x50	T1A90B-90	1	90	-90	0	3
DST_3x50	T1A90B90	1	90	90	0	3
DST_3x50	T1A40B0	1	40	0	0	0

Probe_ID	Tip_ID	Tip_Number	A	B	C	Tip_Diameter
1_5BY20	T1A0B0	1	0	0	0	1.5
STER_40x1	T4A0B0	4	0	0	0	1
STER_40x1	T5A0B0	5	0	0	0	1
STER_40x1	T1A0B0	1	0	0	0	1
STER_40x1	T3A0B0	3	0	0	0	1
STER_40x1	T2A0B0	2	0	0	0	1
Schijftaster_18BY70	T1A-90B-90	1	-90	-90	0	18
Schijftaster_18BY70	T1A-90B180	1	-90	180	0	18
Schijftaster_18BY70	T1A-90B-25	1	-90	-25	0	18
Schijftaster_18BY70	T1A-90B105	1	-90	105	0	18
Schijftaster_18BY70	T1A-90B-45	1	-90	-45	0	18
Schijftaster_18BY70	T1A90B-90	1	-90	-90	0	18
Schijftaster_18BY70	T1A0B0	1	0	0	0	18

Successfully loaded 70 tips from 13 probes in HexMF

- 1: Toolbar
- 2: Probes and tips from the measurement routine
- 3: EB probes and tips (MAESTRO)
- 4: Status bar

4. Short Workflow Instruction

1. Start HexMF and wait until it's ready
2. Start PC-DMIS
3. After PC-DMIS is ready, open a measurement routine in PC-DMIS
4. Start PcdProbeList.exe
5. Click the <Read probes from HexMF> Button in the toolbar and wait until the EB probes will be displayed.



6. Click the <Read probes from active measurement routine> button

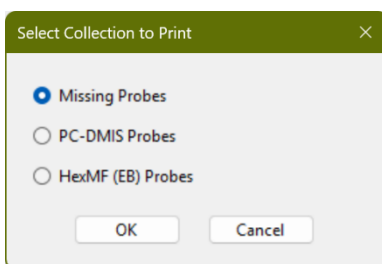


7. Click the <Compare PC-DMIS with HexMF probes> button.



As a result you should see in the status bar the number of probes which are missing and the missing probes are shown with a yellow background color in the PC-DMIS Tips data view.

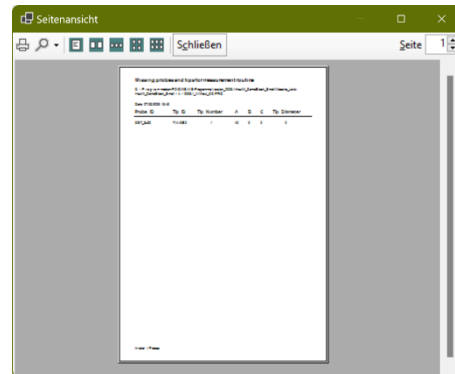
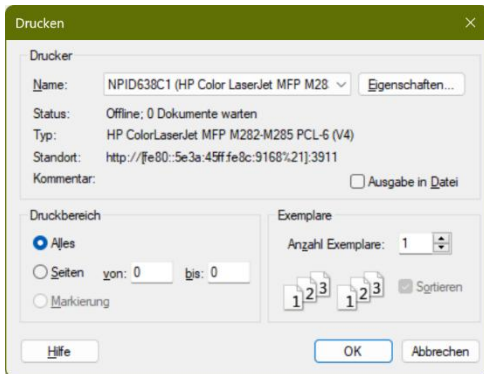
8. You can print the list of missing probes with the <Print probe list> button.



A dialog will pop up where you can select the probe list which you like to print:

After selecting you can click the <OK> button.

You can select in the following dialog the printer or a default PDF driver (if installed on your system).



- Also you can save the missing EB tools to a JSON file by using the button <Export missing EB probes to JSON>.



If you close the measurement routine the PC-DMIS Tips and Probes data view will be cleared. If you open another measurement routine the tools will be read automatically.

If a measurement routine includes a probe assembly which is existing in HexMF, but it's defined with another name, the LOADPROBE commands in the measurement routine can be replaced with the name from HexMF probe assembly. For this operation you need to select the PC-DMIS probe in the PC-DMIS Probes list and the HexMF probe in the EB Probes list. After both physically identical probes are selected, you can click the <Replace Probe IDs> button in the toolbar. The software will now hide PC-DMIS until all relevant LOADPROBE commands are adjusted with the HexMF probe assembly name.



A log.txt file will be created in a subfolder \Logs in the application folder.

The <Export HexMF probes to JSON> and <Import HexMF probes from JSON>

button can be used to save and reload the existing Eb Probes and Tips to or from a JSON file. The file will be stored in the application folder.



The <Export PC-DMIS probes to JSON> can be used to export the PC-DMIS probes in a JSON file. This allows the user to read the used probes in a measurement routine on an Offline Station or on a Legacy CMM.

The JSON file will be stored in the folder of the measurement routine during the export. Also the import search on this location for the file.

The JSON file name includes the part name (e.g.

PcdProbes_for_{PartName}.PRG), making it easier to identify the content of the file and organize it accordingly.



The <Import PC-DMIS probes from JSON> can be used to read this file on a Maestro system without parsing the measurement routine again.





5. About Hexagon

Hexagon is the global leader in measurement technologies.

We provide the confidence that vital industries rely on to build, navigate, and innovate.

From microns to Mars, our solutions ensure productivity, quality, safety, and sustainability in everything from manufacturing and construction to mining and autonomous systems.

Hexagon (Nasdaq Stockholm: HEXA B) has approximately 24,800 employees in 50 countries and net sales of approximately 5.4bn EUR.

Learn more at [hexagon.com](https://www.hexagon.com).